



West Pharmaservices

Process and Packaging Machinery Engineers

Bausch & Stroebel KS1025 Overcapper for vials



Bausch & Stroebel, rotary overcapper complete with cap feeder unit & control panel. The machine consists of a 250 mm wide Infeed table fed onto a rotary table and from the table into the machine starwheel. The alu caps are fed from a vibratory bowl freestanding outside the machine and are placed & sealed onto the vials, prior to them being discharged onto the 250 mm wide discharge table. The rotary capper is controlled by a HMI. The machine is linked to the a free standing electrical panel, which measures 800mm x 500mm x 2050mm high, and weighs approx 300 kgs.

Year 1996

Model KS-1025

Serial Number 58977

Capacity Speed 4200 units/Hour

Size range 7.5-58 mm dia x 185 mm high

Estimated Shipping Weight 1150 kgs

Length 2.2 M

Width 2.6 M

Height 1.85 M

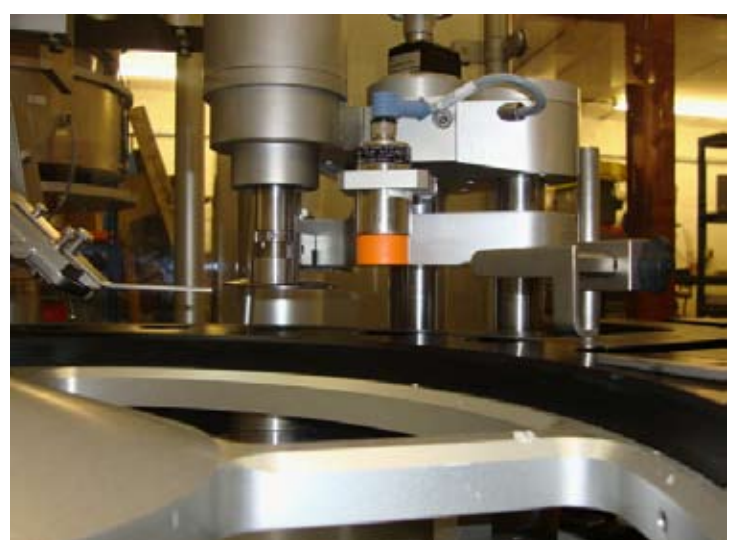
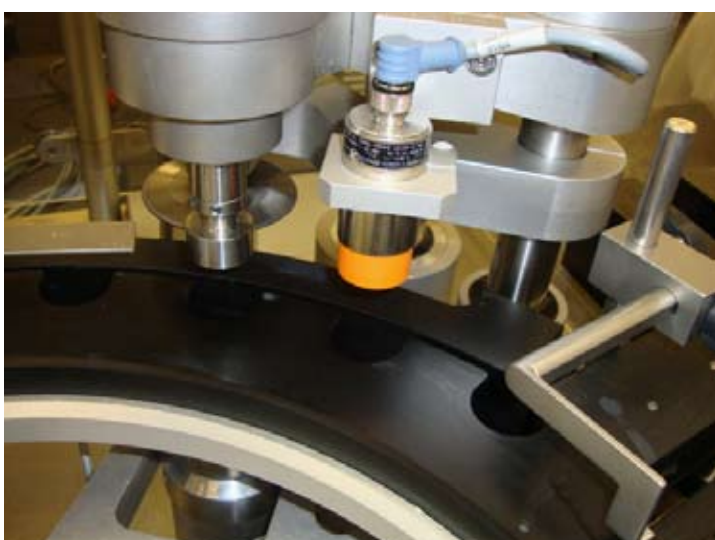
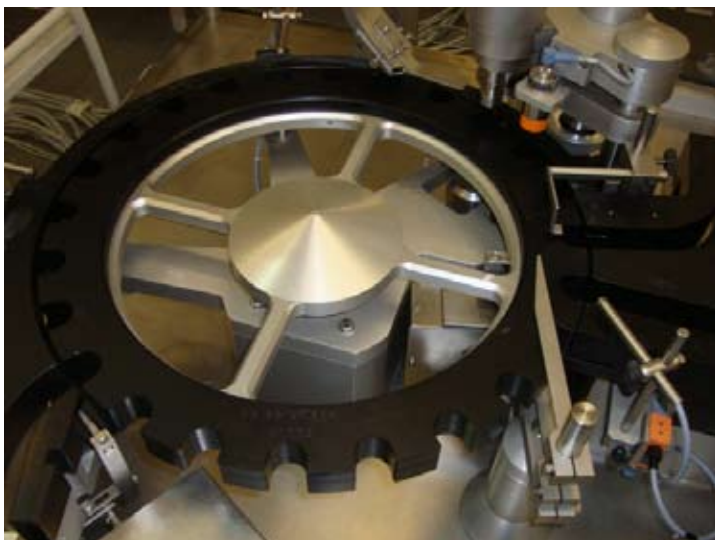
Voltage 400/230/24 VOLTS

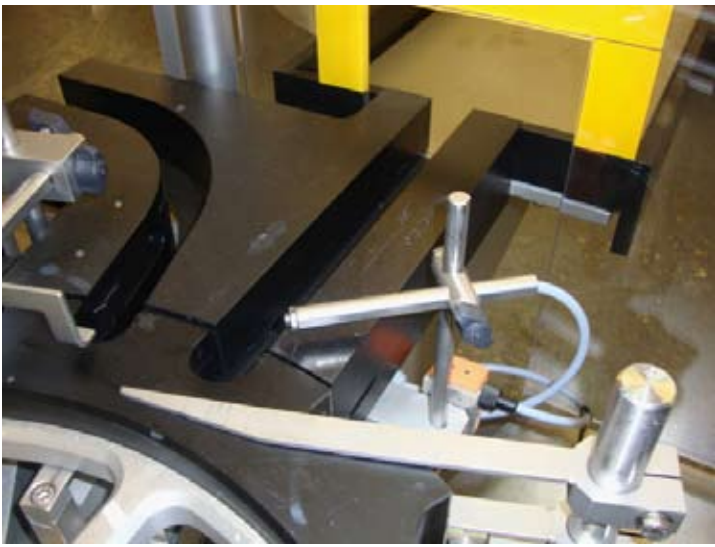
Frequency 50 HERTZ

Phase 3+1

Current 2 kw







**STOCK NUMBER
WP450664**

www.westpharmaservices.co.uk